



Separation made simple.



Reliable, self cleaning DTE360 separators have the versatility for multiple applications within stormwater and wastewater management.

Manufactured in the USA!

DTE360 Separator

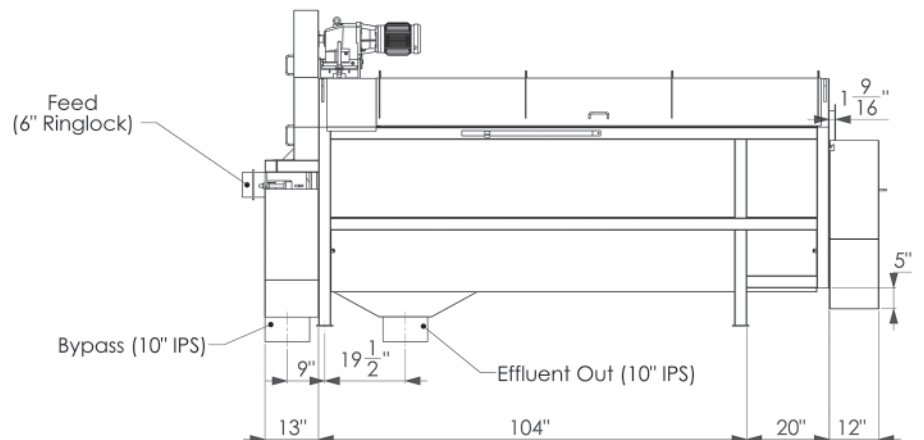
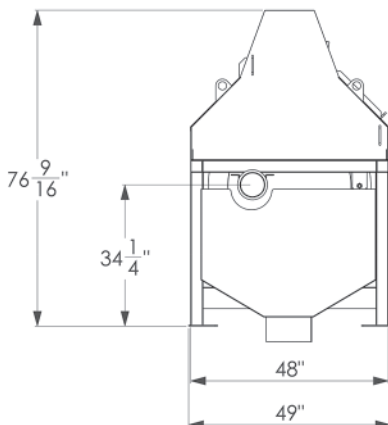
The internally fed DTE360 solid/liquid separator is an all stainless steel unit built with the goals of long lasting, self cleaning, trouble-free operation. Some of the applications include:

- Stormwater screening
- Municipal sludge screening
- Sludge thickening
- Food processing
- Pulp and paper
- Petrochemical
- Seafood
- Winery



From screening contaminants in advance of downstream liquid treatment, to ultra-fine applications in food processing, DTE has a screen to help you meet your goals. Stock screen sizes range from .015" mesh to 1/2" perforated plate, with custom sizes both larger or smaller, DTE can supply exactly the screen your application requires. Heavy-Duty nylon idler wheels rotate with sealed, SS bearings, keeping your operation running smooth, from start to finish.

36" DTE360

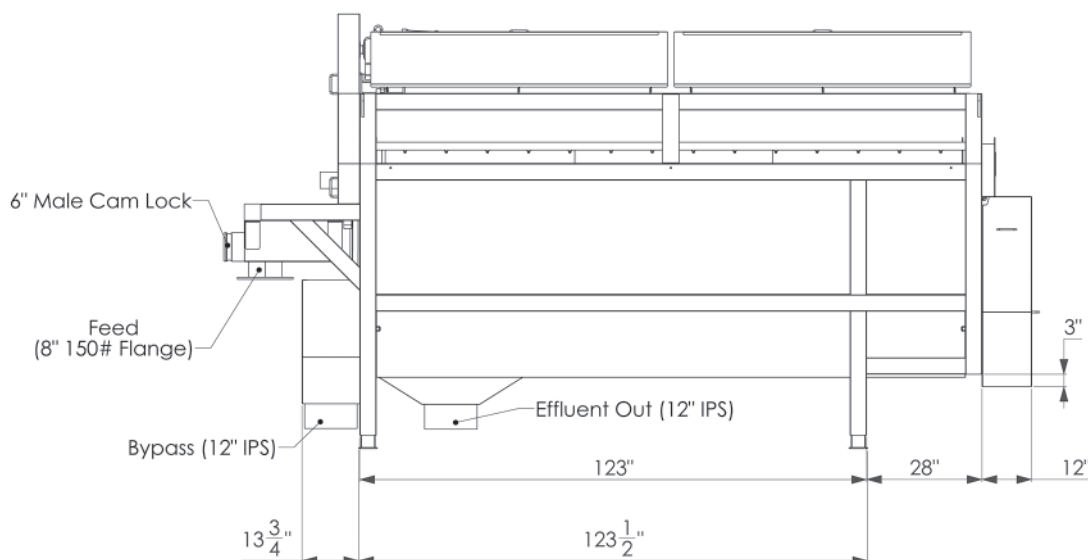
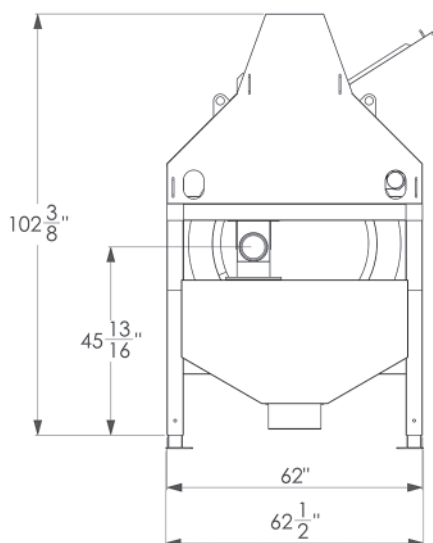


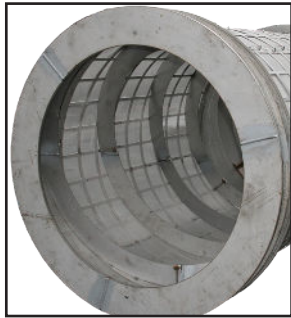
DTE360

Summary of Specs

- Low horsepower operation
- 3" Stainless steel tubular frame construction
- Solid nylon idler wheels with sealed SS bearings
- Gearbox made in the U.S.
- Built in bypass system
- Non-slip belt drive
- Drive system well out of harms way
- External CIP standard
- Proven roller press
- No daily cleaning required
- Mesh and hybrid screens available
- Custom engineered plans available

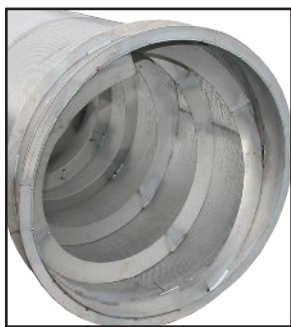
48" DTE360





Wire mesh screens

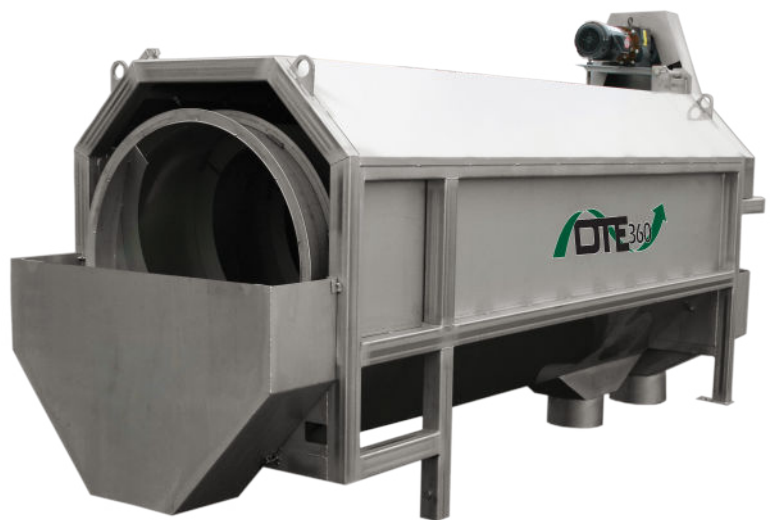
.015" OPENING
.024" OPENING
.030" OPENING



Perforated plate screens

.0625 INCHES
.125 INCHES
.1875 INCHES
.25 INCHES
.375 INCHES
.5 INCHES

Other sizes available on request



Manufactured in the USA!

